



NasPhotoSafaris.com

# National Parks & Accommodation

04/02/2012—13/02/2012

Information Sheet

## Special points of interest:

- Safari led by Raymond Barlow, professional wildlife photographer and experienced, well trained naturalist guides who have intimate knowledge of the areas we explore and offer private game driving
- Intensive game viewing and photography in the Serengeti in the path of the Great Wildebeest Migration
- Time to absorb and photograph it all – we take the time to absorb the experience and wait for the action to occur or just the right light
- Exploration of Ngorongoro Crater – nickname the '8<sup>th</sup> Wonder of the World'
- You will see that as well as treks and wildlife safaris we offer our clients insights into the way of life and cultures of local communities. By spending some time in local villages and visiting cultural activity programmes you get a much more rewarding and richer safari experience and the local people get a more direct share of the benefits that foreign visitors can bring. This is a very important part of our work in East Africa with the Maasai and their bomas
- Limited to 8 participants + photography guide – as a compromise between providing ample space and reducing our carbon footprint, we offer 4 people to sit in a 7 passenger extended Landcruiser and 3 people to sit in a 5 passenger normal Landcruiser

## Why Raymond Barlow? Why NasPhotoSafaris? Why January?

### Raymond Barlow

Ray leads photography trips to many places all over the world and for several years now has concentrated on birds and wildlife. With careful consideration, Ray knows the value of a good shot and will work together with his team to gain optimal viewing and opportunities throughout his personally-led adventures. We all have the same goal—to take picture, learn about photography and create an adventure of a lifetime.



### NasPhotoSafaris

NasPhotoSafaris is committed to providing world-class experiences in some of the most spectacular locations in East Africa.



Naseeb 'Wild Nas' Mfinanga owns and operates NasPhotoSafaris and has spent his life learning from his close family and experiencing professional hunting, wildlife management and ecological issues (as well as his formal education). In recent

years Nas has turned his attention to wildlife & landscape photography, searching for more from his professional guiding experience. He is not formally trained in photography but understands and captures impressive images throughout his personal adventures in the bush or as he assist to lead photography groups throughout the year.

### February & The Migration

We time these trips to coincide with the Great Serengeti Migration. Although there are never any guarantees in the natural world, we will normally be able to see huge herds of wildebeest and other plains animals grazing on the savannah. The herds follow the rains and feed on the shooting grasses, therefore what we actually experience is dependent on the weather patterns. If previous years are any indication, we have positioned ourselves to be right on location at the right time. February has the herds on the open plains of Ndutu preparing for the birthing season.

## The Guides & Vehicles

At NPS, we have a fleet of Toyota Landcruiser 4WD vehicles, modified for game driving and wildlife viewing. These include extended 8 seater and normal 6 seater versions. Each vehicle has a pop top or canvas roof, large windows, charging system, first aid kits, Simba jack, fire extinguisher, reflector triangles, tool kits, some with refrigerators and is driven by an individual driver. We have our own garage and

mechanic on-site for services and repairs and they can even convert our own vehicles to the extended version when required. Our team of guides speak English, French, Spanish and Swahili; as well as their own tribal languages. All members have a minimum of five years guiding experience and have guide books and binoculars to offer for use by the clients. We

pay above award wages and work together as a family, sharing good times and bad. We have a sponsorship scheme for our guides' families, whereby one child per year, of school age, is sponsored into education. We believe this to be the key to escaping the cycle of poverty.



© Naseeb Mfinanga

## Arusha National Park & Arusha Coffee Lodge



**Arusha National Park** is home to concentrated numbers of herd animals like giraffe, elephant and buffalo. It is located at the foot of Mt Meru and the variation of the terrain provides excellent views of grassy marshlands, sub-tropical rainforests, extinct volcanic craters and



amazing lakes. A day not to be missed and is the perfect addition to any itinerary.

**Arusha Coffee Lodge** lies cradled in the endless acres of Tanzania's largest coffee plantation. This exclusive, boutique hotel lodge has been designed around the farms' original plantation homes, radiating the warmth and invitation of the old colonial plantation homes historically distinctive to the coffee plantations. It consists of 18 plantation houses lavishly furnished, featuring split-level living room area and a private deck patio. Offering every guest

amenity and fancy, the Arusha Coffee Lodge is the place to relax and rejuvenate before or after a Tanzanian Safari. Laze around the swimming pool, enjoy a sun-downer at the Safari Bar, unwind after a delectable meal in the lounge with a good liquer and a fireside chat. Enjoy complimentary wi-fi throughout the public areas.



*'All I wanted to do now was to get back to Africa. We had not left it, yet, but when I would wake in the night I would lie, listening, homesick for it already' - Ernest Hemingway (Green Hills of Africa, 72: 1935)*

## Lake Manyara National Park & The Manor at Ngorongoro

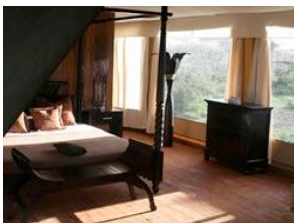
**Lake Manyara National Park** is situated at the base of the Great Rift Valley Escarpment, with fresh water filtering down through the ancient underground waterways of Ngorongoro. Famed for its unusual tree-climbing lions it also has a large elephant population, rich bird life in the forests and thousands of flamingos on the soda lake.



**The Manor at Ngorongoro** is reminiscent of an elegant, up country farm home in the Cape

Dutch style of architecture. The Manor at Ngorongoro, with its 20 luxurious guest cottage suites, is a luxury safari experience fusing East African safari hospitality with old world Afro-European architecture, and

decor. Fireplaces and comfortable seating areas feature throughout the indoor living areas and outdoor activities like tennis & horse riding are available—enjoy wi-fi through the public area also.



## Serengeti National Park (Ndu) & Lake Masek Tented Camp



**Serengeti National Park** covers an area of 14,763 sq km and lies between the shores of Lake Victoria in the west, Lake Eyasi in the south, the Great Rift Valley in the east and the Maasai Mara to the the north. The pinnacle of the Serengeti immortal-

ity is the wildebeest migration. It is beyond description when the Serengeti plains witness flying hooves and dust as hundreds of thousands of gnus and zebra, race against the skyline in their annual migration that covers over 800km. Game drive in the rolling grasslands and criss-crossed with forested riverine valleys, the Serengeti plays home to millions of Africa's large mammals, making this one of the world's most famous wildlife destinations. **Lake Masek Tented Camp** situated on the Ngorongoor/Serengeti

borders overlooking Lake Masek. This unique location is witness to the Wildebeest Migration which takes place from Dec—Apr each year. The camp is eco-friendly as all the electric power is supplied by solar panels and water is collected during the rains. All the products used are biodegradable in order to ensure that the environment is kept pristine. Guests can enjoy a relaxing bath or take a shower under the stars. The main house has a lounge and dining area and a large verandah overlooking the lake.

## Ngorongoro Conservation Area & Ngorongoro Crater Lodge

**Ngorongoro Conservation Area (including Ngorongoro Crater)** Ngorongoro is collapsed volcano - an incredible natural amphitheatre, 25 km across and teeming with all of the African big game. Early morning descent into the crater for spectacular scenery and game viewing in what has been described as the eighth wonder of the world. Within it's perimeters are thousands of wildebeest, many black rhino, cheetah, lions, hyenas and other predators. Flamingos inhabit the soda lake in the centre of the crater, and other birdlife is abundant especially

around the swamp. Moving from Serengeti to Ngorongoro, we enjoy lunch en-route at Olduvai Gorge and a view of the archaeological sites where early human tools and fossils have been found.

**Ngorongoro Crater Lodge** is dramatically beautiful, and often referred at the 8th world wonder



of the world. Perched at the edge of the Ngorongoro Crater, Tanzania, this exclusive luxury lodge enjoys spectacular views of the World Heritage Site in which it stands. Through large glass windows in the bathroom, bedroom and lounge area, truly remarkable and memorable views can be enjoyed whilst lounging in absolute comfort and style. All the suites at Crater Lodge have en-suite chandelier-lit bathrooms where absolute glamour and opulent interiors, ruby, gold and silver in colour, can be indulged in whilst taking in this memorable area that is the wildlife rich Ngorongoro Conservation Area.



## Crater Highlands & Plantation Lodge

**The Crater Highlands** are located outside the crater on the highland hills, where Maasai continue to herd their cattle and goats as they have done for years. Maasai in traditional dress with laden donkeys can be seen walking alongside zebra and wildebeest. Human habitation in the highlands is what differentiates Ngorongoro Conservation Area from the national parks and is central to the appeal of hiking in the area. The area is highly fertile and the location of huge coffee plantations that

flourish with its altitude and plentiful rainfall.



**Plantation Lodge** rests on the soft, red-brown hills amidst the vastness and silence of East Africa. The individually furnished

rooms and suites melting harmoniously into the flowering garden offer comfort and relaxation. Everywhere you look, you can see and even feel the personal atmosphere of this owner-run lodge with furnishings that were selected with great attention to detail. Plantation Lodge's cordial service leaves no wish unfulfilled



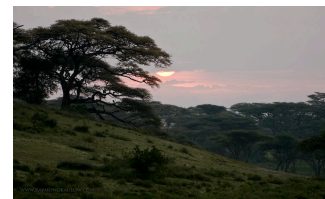
*'Cultivate the habit of listening and observing, rather than merely hearing and seeing'*  
**Responsible Tourism**

## Esilalei

**Esilalei** is a small village in the wildlife corridor between Tarangire & Manyara national parks for Maasai lands and life experience. We built and maintain a small school here, which you can visit if you wish. You can visit traditional huts, take part in activities like milking goats, jewellery beadwork, spot animals & birds on a short walking safari, find out about the medicinal uses of the savannah plants, and learn from an elder the history and culture of these fascinating people. Feel free to



roam and photograph—the colours are spectacular and the backdrop is authentic. Transfer back to Arusha Coffee Lodge for day room and early dinner before transferring onto Kilimanjaro airport for departure.



## Capture True Africa

### **ACCOMMODATION, FOOD & GAME DRIVING**

Some of the safari accommodations are in modern, deluxe lodges – in harmony with the environment and constructed using local materials. In the Serengeti, you'll stay at a mobile tented camp; immersing you with the sights and sounds of Africa. Food at all locations is well prepared, with local flair. We enjoy early mornings and late afternoons, for the best wildlife photography and light. Long days in the field and excellent driver-guides who are sensitive to the needs of photography/migration groups. We do not restrict ourselves to a rigid schedule of times, but instead allow the wildlife and environment to dictate our routine (within the regulations of the national parks and issued permits).

#### **Price Includes**

All meals, accommodations, park & camping fees, all local travel including transfers, all activities listed, all bottled drinking water, driver/guides and vehicles, temporary membership to the Intensive Care Air Ambulance.

#### **Not Included**

International airfare, air taxes and foreign airport taxes, excess baggage charges, passport or visa fees, beverages (except drinking water), gratuities for driver guides and camp staff.

#### **Please Note**

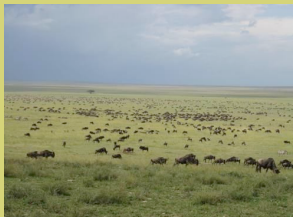
For those who wish to extend their stay, we can arrange extensions to this trip (For example, Zanzibar). Contact us to discuss various options. It is important to contact us very early if you wish to extend – Tanzania has become a very popular destination and lodges on the mainland and coastal islands can fill up quickly.

#### **Payments**

Payments should be made in U.S. Dollars (USD) or Canadian Dollars (CAD) to Raymond Barlow

#### **To Book / Contact Us**

[ray@raymondbarlow.com](mailto:ray@raymondbarlow.com)



# Tanzania

Whether it is diverse cultures, vastness of the sky, the natural beauty of the landscape or the unique attraction of wildlife; Tanzania has it all. A vast country found in the eastern side of

the continent of Africa. Tanzania is a captivating country that offers endless opportunities of discovery. This trip is an excellent opportunity to be guided by a Wildlife Photographer, Raymond Barlow

and his team - experience their knowledge of wildlife and photography with a unique safari adventure workshop in Tanzania.

